



403/44-52 The Esplanade Surfers Paradise, QLD



## ALL PROPERTIES GROUP | CHRIS GILMOUR & MADISON ELLIOTT SOLD...

SOLD by CHRIS GILMOUR | 0438 632 459  
and MADISON ELLIOTT | 0401 910 546  
- | 403/44-52 The Esplanade Surfers Paradise | -

\$410,000

**Type:** Apartment  
**Sold Date:** Monday, 13th June 2022  
**Land:** 105 m2  
**Building Size:** 51 m2

### Chateau Beachfront - Your Sea-Change Awaits

The Chateau Beachside is an iconic beachfront Surfers Paradise tower - one of the last remaining originals directly opposite the boardwalk, patrolled Lifeguard station and only 350m north of Cavill Avenue. An unparalleled position in the heart of Surfers Paradise with shopping, restaurants and the world-famous Surfers Paradise beach at your doorstep, offering the ultimate coastal lifestyle.

The Chateau Beachfront complex features the beach-facing "Sandbar" restaurant and bar on-site, as well as facilities such as :

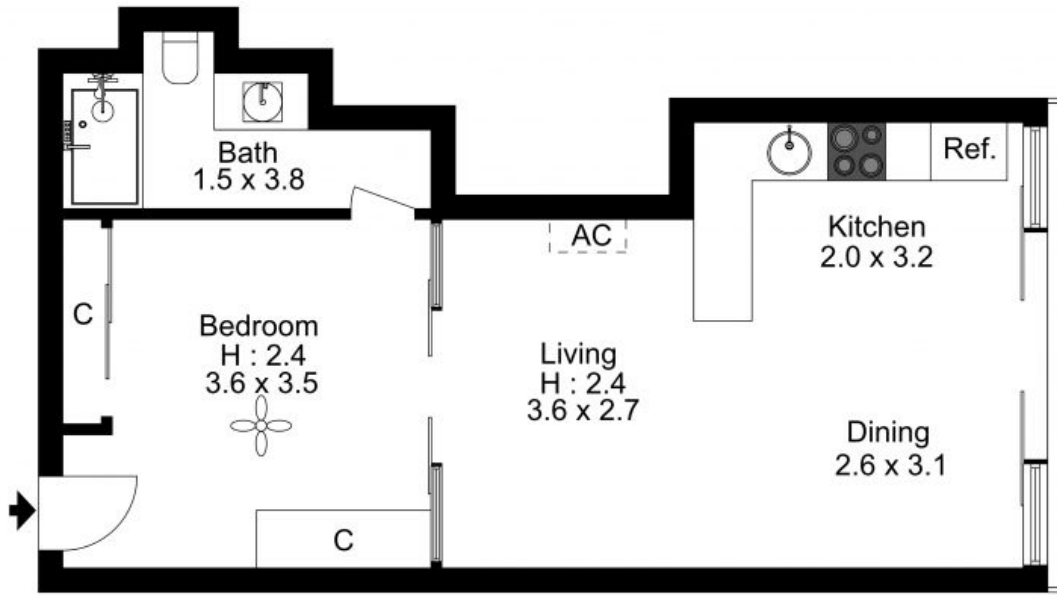
- ? 3 x spas
- ? steam room
- ? sauna



**Chris Gilmour**  
0438 632 459



**Madison Elliott**  
0401 910 546



The floor plan is not to scale; measurements are indicative and in metres. Exterior elements are not in position.  
Plans should not be relied on. Interested parties should make and rely on their own enquiries.