



32706/1 Cordelia Street South Brisbane, QLD

2 2 1

## Location, Location, Location

\*\* Dual Key Unit\*\*

Welcome to South Brisbane!  
The suburb where you want to be living today!

Whether you are seeking a first home, downgrading or wanting to get into the market then look no further as that dream can be yours today!

This brand new rendered, turn key ready to go 85m2 apartment is located in one of the most prime areas of Brisbane. The luxury feel of this apartment comes with a stunning city skyline view with a glimpse of the Brisbane River that can be seen from both bedrooms. The lounge area as well as the decent size balcony can be enjoyed with family and friends as they will be boasting whilst relaxing sipping on a cold beverage, whilst soaking up those warm sunshine Queensland days.

### Features:

- This 2 bedroom, 2 bathroom, the dual key apartment can be enjoyed all year round with ducted air-conditioning
- All rooms are fitted with ceiling fans
- Gas top stove and oven
- Dual key apartment

750,000

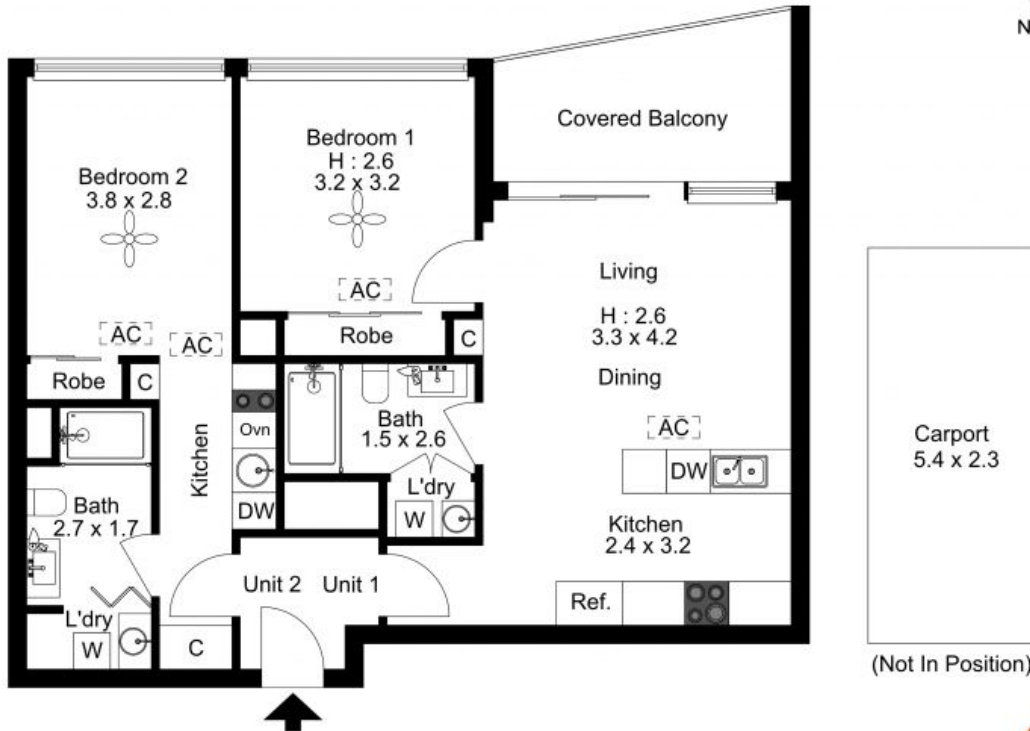
**Type:** Unit  
**Building Size:** 85 m2



**Caesar Walkins**  
0466 969 017



**Lizzie Yang**  
0431 065 643



The floor plan is not to scale; measurements are indicative and in metres. Exterior elements are not in position. Plans should not be relied on. Interested parties should make and rely on their own enquiries.