



45-47 Lady Ardee Circuit Stockleigh, QLD



ALL PROPERTIES GROUP & CHRIS GILMOUR + ILS TOWNLEY SOLD...

SOLD BY CHRIS GILMOUR & ILS TOWNLEY 0438 632 459

Give yourself the home that everyone wants. This stunning property offers the glamour, style and flexibility you deserve, all within a family-friendly location close to schools, shops and parks. With four bedrooms, two bathrooms and quality finishes and fixtures throughout, this home is ideal for first-time buyers, growing families or those who simply enjoy the finer things in life.

Living is made easy with an open-plan layout filled with natural light. Timber floors and crisp white walls create a sense of elegance and you can flow seamlessly from the lounge area and dining space into the kitchen.

The heart of Logan Village is only a short drive from your new home. Logan Village Marketplace, the Wharf Street Centre and The Village Place have your retail needs covered. Logan Village Park is a perfect place for afternoon walks while families will relish easy access to a host of schools. Logan Village State School, King's Christian College and local childcare options are all within a few minutes drive. If you commute to the city, you can be i

\$1020000

Type: House
Sold Date: Monday, 7th February 2022
Land: 1990 m2



Chris Gilmour
0438 632 459



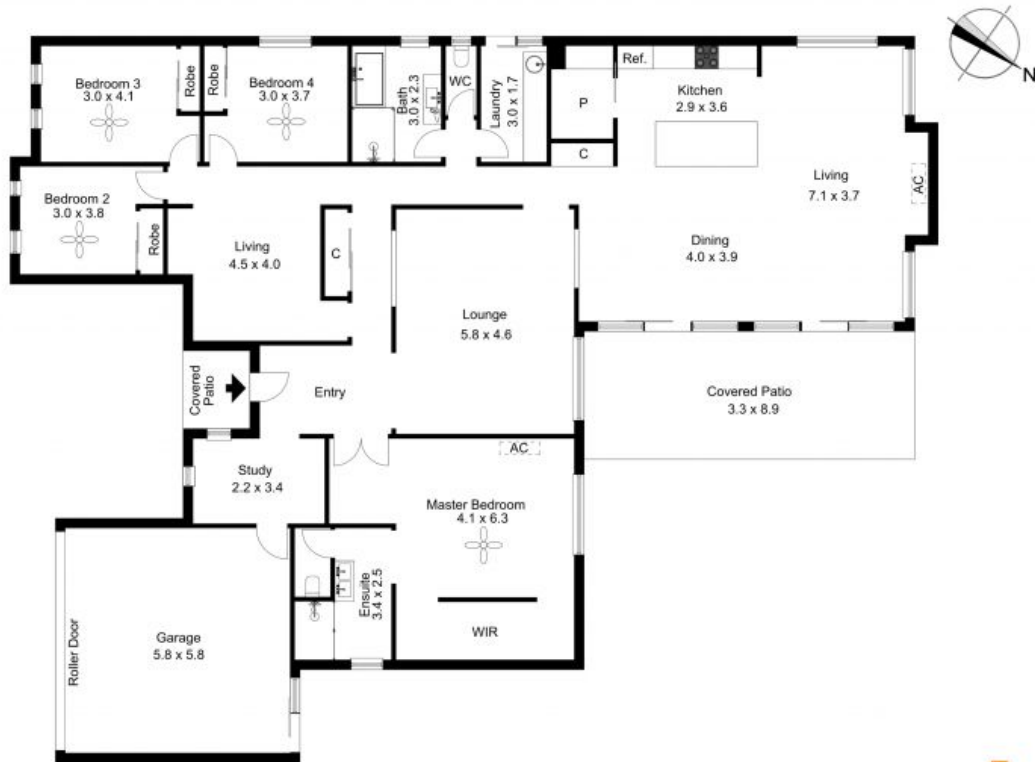
ILS Townley
0437 210 030

www.allpropertiesgroup.com.au

PH: 07 3800 4111 | FAX: (07) 3103 4337

1 / 6 Webber Dr, Browns Plains, QLD 4118





The floor plan is not to scale; measurements are indicative and in metres. Exterior elements are not in position. Plans should not be relied on. Interested parties should make and rely on their own enquiries.