



4/30-42 Cotswold Street Mount Warren Park, QLD



## Modern House Style Living

ALL PROPERTIES GROUP RENTALS PRESENTS

Prior to visiting any property, we ask that you agree to the following.

1. You will enter the home per family. No children or the elderly
2. We will open any doors needed
3. We can allow you to have 5 mins in the home
4. All internal doors will be open, NO cupboards are to be opened by visitors
5. Hand sanitiser or wipes will be made available
6. All other business after the inspection will be by electronic means

House style living, apartment style convenience!

These lovely 2 bedroom cottage style homes are located in a well maintained and highly sought after development that is situated in a highly convenient location close to all expected modern conveniences.

These homes have a spacious feel with a lovely living/dining open plan style that is such a pleasure as it leads directly out to the established garden.

Property Features:

\$340 Per Week

**Type:** Unit

**Date Available:** Friday, 15th October 2021

**Bond:** \$1,360.00



**All Properties Group**

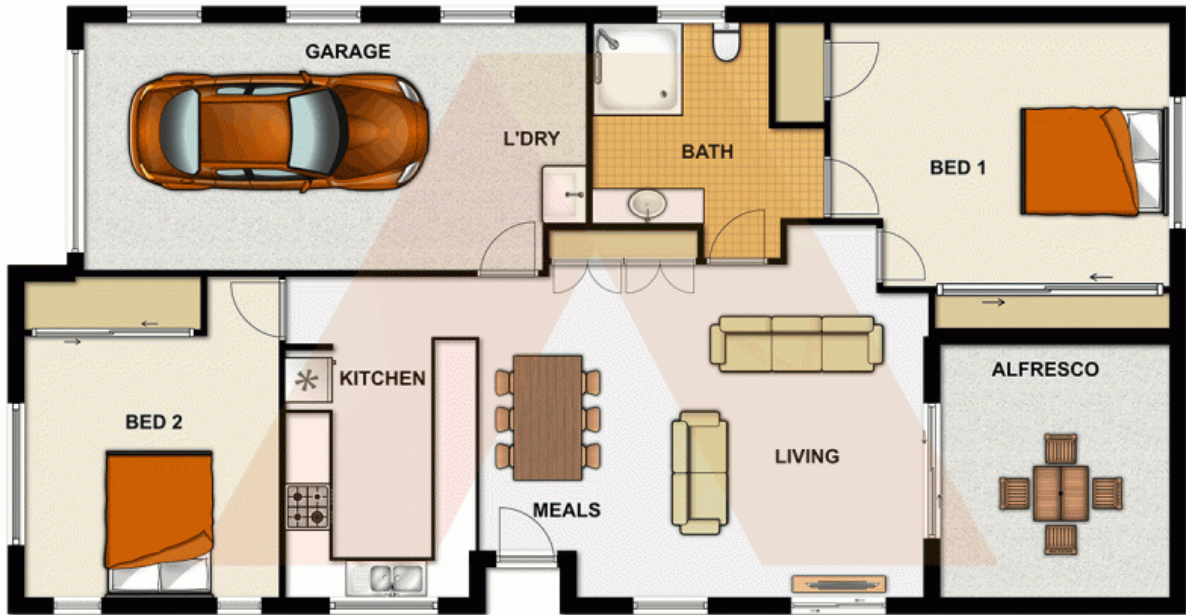
**Rentals**

[www.allpropertiesgroup.com.au](http://www.allpropertiesgroup.com.au)

PH: 07 3800 4111 | FAX: (07) 3103 4337

1 / 6 Webber Dr, Browns Plains, QLD 4118





4/30-42 Cotswold Street, Mount Warren Park,  
QLD