



44/116-136 Station Road Loganlea, QLD



SOLD by DAEMEN BRAY | 0478 064 755

ALL PROPERTIES GROUP & DAEMEN BRAY SOLD?

Waterford Park | 44/116-136 Station Road, Loganlea

Brilliant Opportunity now Available - Move in or Invest!

Prime Opportunity in sought after location!

Welcome to 'Waterford Park' in Station Road Loganlea - a modern complex built-in 2008 in a superb location with an immaculate pool area with family in mind; the perfect investment or place to call home and a highly sought after opportunity!

Right from the moment you enter this home you are immediately impressed with the size and welcoming feeling of the open plan living space which effortlessly draws you out to the entertainment area and private courtyard.

Features of this Townhouse:-

\$240,000

Type: Townhouse

Sold Date: Sunday, 6th June 2021

Land: 142 m2

Building Size: 107 m2



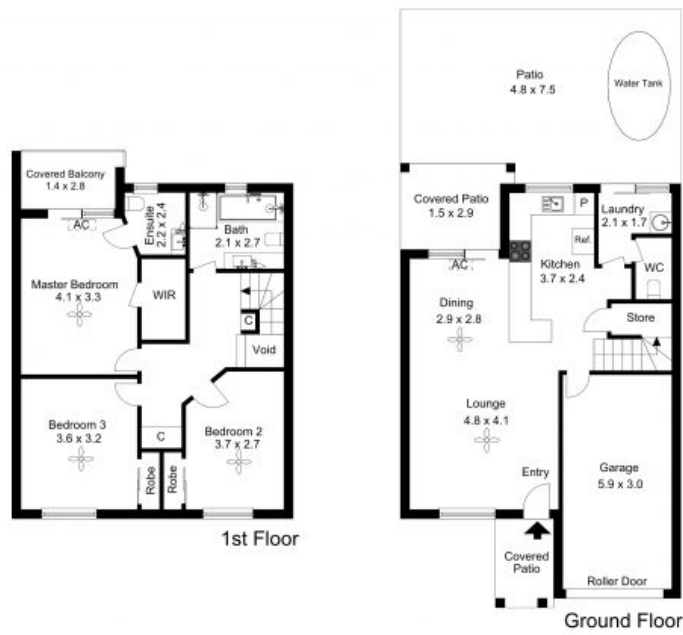
Daemen Bray

0478 064 755



David Neate

0407 824 824



The floor plan is not to scale; measurements are indicative and in metres. Exterior elements are not in position. Plans should not be relied on. Interested parties should make and rely on their own enquiries.