



6 Boxwood Close Heathwood, QLD



SOLD by NATALIE CHILD | 0433 853 843

ALL PROPERTIES GROUP & NATALIE CHILD SOLD?

- | 6 Boxwood Close, Heathwood | -

METRICON HOME WITH PRIME LOCATION AND AWARD WINNING LAWN

Situated in the quiet Boxwood Close, fronting onto beautiful surrounding gardens and a stone's throw from parks, bus stops and shops, this charming Metricon Home is simply bursting with character at every turn.

Beautifully proportioned indoor living blends with a spacious outdoor alfresco area boasting a tranquil retreat with a water feature and manicured lawns. High ceilings throughout helps the living area create a keen sense of space, while the well-appointed kitchen offers everything the chef of the home requires.

The spacious master bedroom fit for a king suite is equipped with air conditioning, walk-in robe and ensuite. The 2nd and 3rd bedrooms both queen in size with built-in wardrobes.

Metricon Belize 19
Built 2009

\$640,000

Type: House

Sold Date: Monday, 12th April 2021

Land: 467 m2

Building Size: 197 m2



Natalie Child

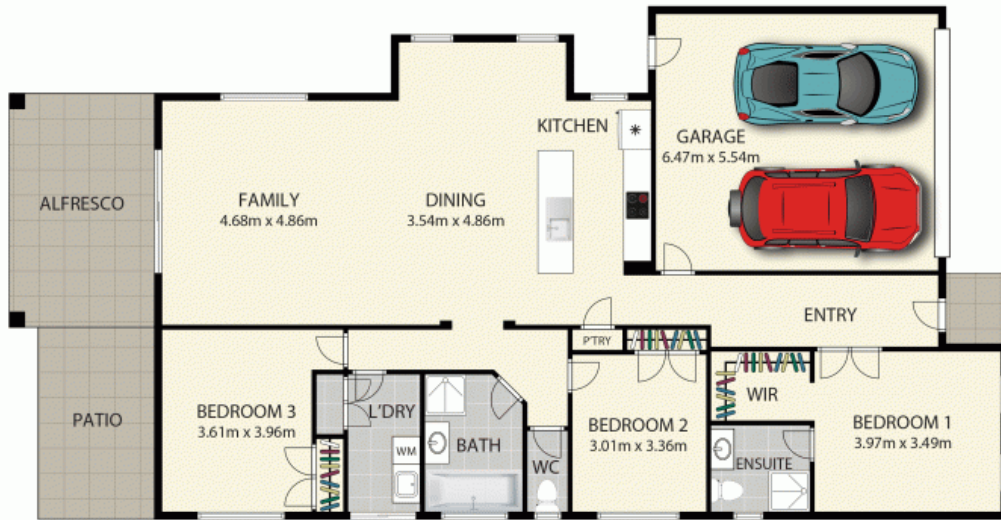
0433 853 843

www.allpropertiesgroup.com.au

PH: 07 3800 4111 | FAX: (07) 3103 4337

1 / 6 Webber Dr, Browns Plains, QLD 4118





6 Boxwood Close, Heathwood

This floorplan is not to scale and is for illustration purposes only. Areas and dimensions are approximate.

 3
  2
  2
  2

Internal Approx. 145.1 sqm
 External Approx. 52.1 sqm
 Total Approx. 197.2 sqm



6 Boxwood Close, Heathwood, QLD