



20 Tweeddale Cct DREWVALE, QLD

 4  2  2

SOLD BY CHRIS GILMOUR 0438 632 459

An impressive contemporary property makes full use of this stylish homes low maintenance block. A light and airy living-dining area is serviced by an efficient, open kitchen with stainless steel appliances and wide bench tops. These areas are united by a spacious alfresco patio area, creating a vast, integrated, family entertainment space.

This home is a delightful mix of modern and contemporary features. Wide hallways, neutral tone floors, wide windows and open plan living. Streamlined bathroom fittings, modern appliances and decorator touches, you will feel you have just walked into a display home.

Situated on a low-maintenance 650sqm block in Trinity Green, the home is within walking distance of gourmet shops and a supermarket, buzzing restaurants and established services. It's an easy commute to the city, public transport a short stroll away. While Brisbane's population continues the demand for these homes, as sophisticated alternatives to high-density housing, will continue to grow.

20 Tweeddale Crt, Drewvale Feature's

- 4 Bedrooms - all with built in's
- 2 Bathrooms + Separate Toilet

\$630,000 SOLD

Type: House
Sold Date: Monday, 15th October 2018
Land: 650 m2
Building Size: 181 m2



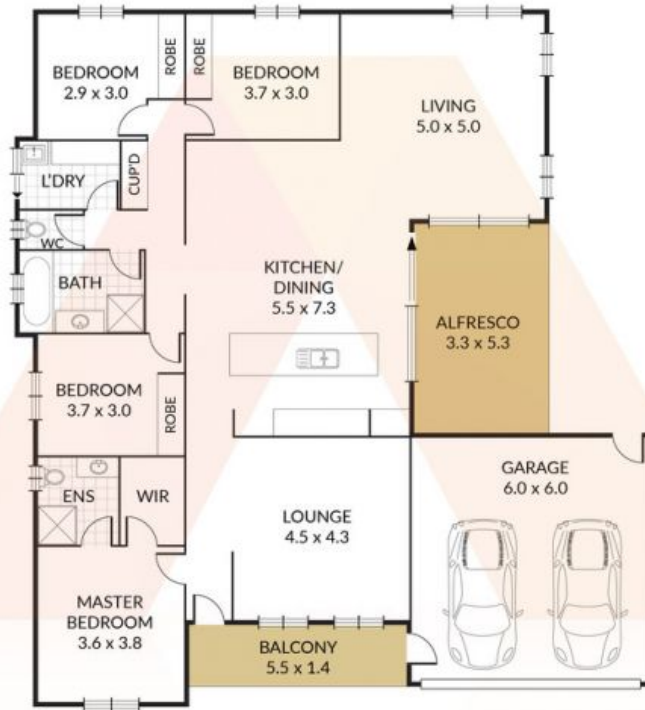
Chris Gilmour
0438 632 459

Internal 155m² External 26m² Total 181m²

20 Tweeddale Circuit, Drewvale



4 x  2 x  2 x 



NOTE: Every precaution has been taken to verify the accuracy of the details. However, prospective purchasers are advised to make their own enquiries.



20 Tweeddale Cct, DREWVALE, QLD