



202-210 Greensward Rd TAMBORINE, QLD

4 3 4

EXECUTIVE RESIDENCE ON ACREAGE.....Sold by Brad Scott

An extraordinary property, like a great novel or a priceless painting, can embrace the spirit and imagination of an entire family. Tamborine has always been the home to the prestigious acreage living in the Gold Coast Hinterland. And now, its crown jewel, a palatial family home on 4.07 acres, landscaped gardens with an architecturally-significant design is exclusively available to discerning buyers.

Upon entry through the private foyer, the detail and extravagance of this home is immediately evident. Sprawling landscaped grounds reach out in all directions, at the heart of these immaculate grounds is a commanding residence, combining grand influences to create a welcoming facade that aptly demonstrates the quality and style that features throughout this amazing estate.

Positioned with a Northerly aspect in Tamborine, this amazing home offers total seclusion while maintaining the convenience of being within close proximity to a number of amenities and an easy commute to Brisbane and the Gold Coast.

There is no shortage of additional features both inside and out to ensure comfort and convenience for the entire family. This includes oversized bedrooms, study, kids activity room

SOLD BY BRAD SCOTT 0414 068 576

Type: House

Sold Date: Wednesday, 28th September 2016

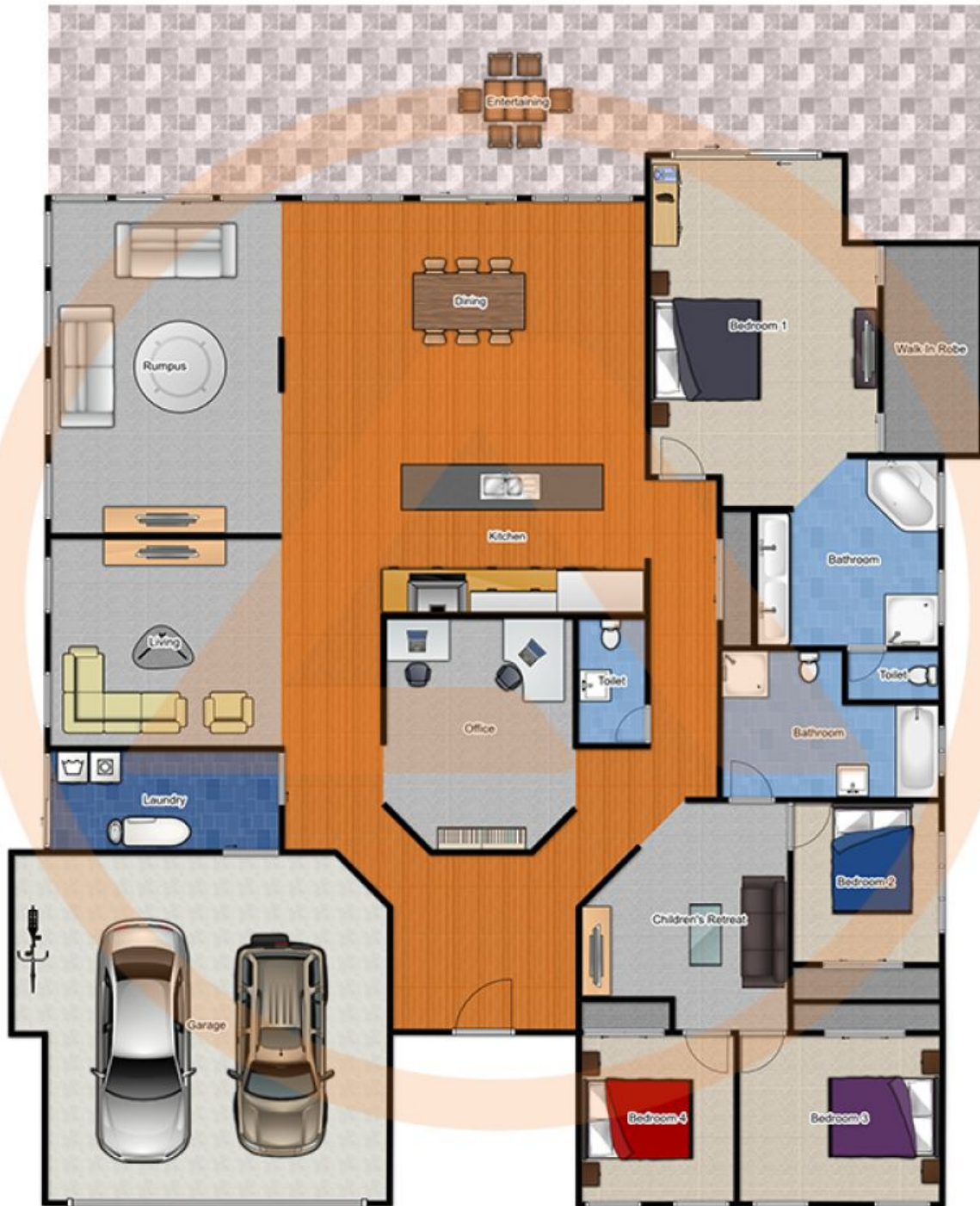
Land: 4.07 Acres

Council Rates: \$1,400.00/year (approx)



Chris Gilmour

0438 632 459



0m 1m 2m 3m 4m

202-210 Greensward Rd, TAMBORINE, QLD